

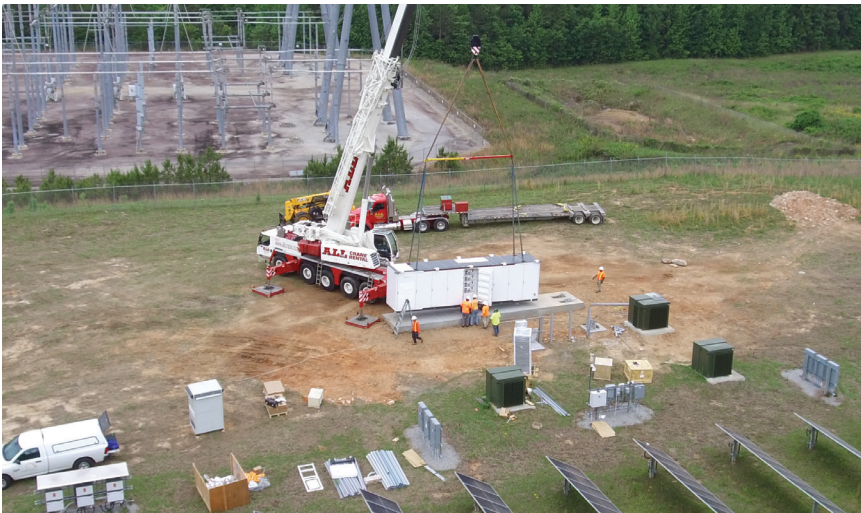
AUGUST 2023

Coweta-Fayette **EMC**

POWERLINES

Coweta-Fayette EMC and True Natural Gas enhance renewable energy at solar plant

A NEWSLETTER FROM
COWETA-FAYETTE EMC



Coweta-Fayette EMC (CFEMC) is proud to partner with True Natural Gas (TNG) to bring additional solar amenities to the existing Michael C. Whiteside Solar Plant in Heard County, Georgia.

The 1.68 megawatt community solar plant, constructed and established by CFEMC and TNG in 2020, provides members who are interested in green energy the option to obtain solar power without having to install and pay for their own solar panels. This year, CFEMC and TNG moved forward with installing a 2 megawatt hour Battery Energy Storage System at the facility to enhance the use of renewable energy while providing more efficiency and reliability.

The upgrade will enable CFEMC the ability to store solar energy that is produced during strong energy production times – during the day, when the sun is shining – and discharge it during times of peak energy demand or when Georgia's grid is under the most stress, especially during hot summer months, which will be most beneficial to our members.

"We're excited for the upcoming completion of this project - a valuable upgrade to our existing solar facility," said President and CEO Chris Stephens.

WHAT IS INSIDE:

BATTERY ENERGY STORAGE	01
TEACHER TOUR 2.0	02
PRESIDENT'S MESSAGE	02

"The technology in the battery storage component will allow us to extend the overall usefulness of the solar array, resulting in higher efficiency and the potential for lowered costs."

The project will enable CFEMC to use the renewable energy to its highest potential, which is great news for CFEMC's members, while consequently offsetting our overall peak demand and potentially lowering overall costs for members.

The solar array features 5,472 panels that generate approximately 55 kilowatt hours per month. Through CFEMC's **Smart Choice Solar** program, our members have the option to purchase the output of up to 10 panels while using that energy to offset the energy they consume at their home.

For more information about **Smart Choice Solar** and to get involved, visit our website online at <https://utility.org/smart-choice-solar/>.



CONTACT US: ☎ 770-502-0226 🌐 WWW.UTILITY.ORG

CFEMC partners with local school systems to host Teacher Tour 2.0



Pictured above (left to right): Local teachers Melissa Robinson, April Deleshaw, Shane Kuykendall, Ansley Ruggeri, Jill Lloyd and Mary Beth Grabhorn tour Plant Vogtle in Waynesboro, Georgia.

Coweta-Fayette EMC (CFEMC) partnered with Coweta County School System and Fayette County School System to host its 2023 Teacher Tour 2.0, an accelerated version of CFEMC's award-winning Alternative Energy Summer Adventure.

Held from July 12-13, CFEMC's 2023 Teacher Tour 2.0 offered local educators the opportunity to tour Walton EMC's Solar Array in Monroe, Georgia before heading to Plant Vogtle (the Vogtle Electric Generating Plant) in Waynesboro, Georgia to learn about the plant's operations.

The fun and educational tour provided a unique experience for teachers, specifically in the fields of science, technology, engineering, and mathematics (STEM) to learn about renewable energy and nuclear power. In addition to the tour, teachers heard from representatives from Green Power EMC and Oglethorpe Power Corporation about the future of green energy and sustainability.

"The goal of CFEMC's Teacher Tour is to bring alternative energy educational resources to local teachers and their students, and we are pleased to promote the program, now in its third year," said Jimmy Adams, Vice President of Energy Services. "This year's tour highlighted renewable and carbon-free energy generation and provided information for educators to help prepare students for future jobs in the energy industry."

Six local educators participated in the interactive tour, including Ansley Ruggeri, April Deleshaw, Jill Lloyd, Mary Beth Grabhorn, Melissa Robinson, and Shane Kuykendall.

The President's Message



Chris Stephens, CEO

I was recently asked at a community event about rising electric rates and what impacts the price of electricity. First, while you may have seen information about other utilities raising their rates, we have lowered ours. Your board and management team at CFEMC have worked diligently over the past couple of years to reduce costs where possible and mitigate increases we have experienced in other areas.

Just as inflation has impacted everything from the price of gasoline to the price of eggs, costs for the fuels required to produce electricity have also risen. This is a timely topic, so I wanted to help explain some of the factors that impact electricity rates (energy bills) in this month's issue of Powerlines.

While there is no short answer, there are a few key elements that impact electricity prices and rates. Some of these factors Coweta-Fayette EMC can manage, while others are beyond our control.

There are three primary parts to your monthly electric bill: a customer service charge, a kilowatt-hour (kWh) Usage Charge and a Power Cost Adjustment (PCA).

The fixed monthly customer service charge, which covers the costs associated with providing electricity to your home, includes equipment, materials, labor, and operating costs necessary to serve each meter in CFEMC's service territory, regardless of the amount of energy used. To ensure the reliable service you expect and deserve, we must maintain the local system, including power lines, substations and other necessary equipment. Like many other businesses, we have experienced supply chain issues and steep cost increases for some of our basic equipment. For example, the cost for a distribution transformer (which looks like a long metal can at the top of a power pole or square green box for underground applications) increased by over 50% since 2020 and wait times to receive this essential equipment are up to 60 weeks. Because we are a not-for-profit cooperative, some of these expenses must be passed on to our members.

Another component of your monthly bill is the kWh charge, which covers how much energy you consume. You have likely noticed the amount of energy you use can vary from month to month and is typically impacted by extreme temperatures. When temperatures soar or dip, your cooling and heating equipment run longer, which increases your home energy use. Regardless, energy consumption is an area that you have some control over, and you can lower your monthly bill by actively reducing energy use. Your thermostat is a great place to start. Keeping your thermostat set at 78 degrees during the summer months is recommended. You can find a lot of helpful information on our website and social media accounts about energy conservation. You can also schedule an energy audit with one of our energy professionals who will walk through your home with you and suggest repairs or conservation efforts you can do that will help reduce your electric usage.

The last component of your bill is the PCA. The Power Cost Adjustment is used to adjust the rates charged to members when the price for fuel to generate electricity rises and falls over time and to recover other expenses as needed for maintenance, operations, environmental requirements, fuel transportation and overhead cost. We recently reduced the PCA because of management practices and the reduction of fuel prices. As a result, your residential rate has decreased by over 10% from the summer of 2022.

I hope this information sheds light on some of the factors that impact your monthly electric bill. While we cannot control the weather or the rising costs of fuels, please know Coweta-Fayette EMC is doing everything possible to keep costs down.

We are here to help you, too. Contact us if you have questions about your energy bill or for advice on how to save energy at home. Visit our website at www.utility.org or call 770-502-0226.

BOARD OF DIRECTORS

James W. Fulton, III, Chairman • J. Neal Shepard, Jr., Vice Chairman • Daniel C. Langford, Jr., Secretary-Treasurer
Therol Brown • Donald Harris • Ross Henry • James Lee Hunter • Alice J. Mallory • Mildred A. Winkles

Coweta-Fayette EMC is an equal opportunity provider and employer /M/E/Y/D